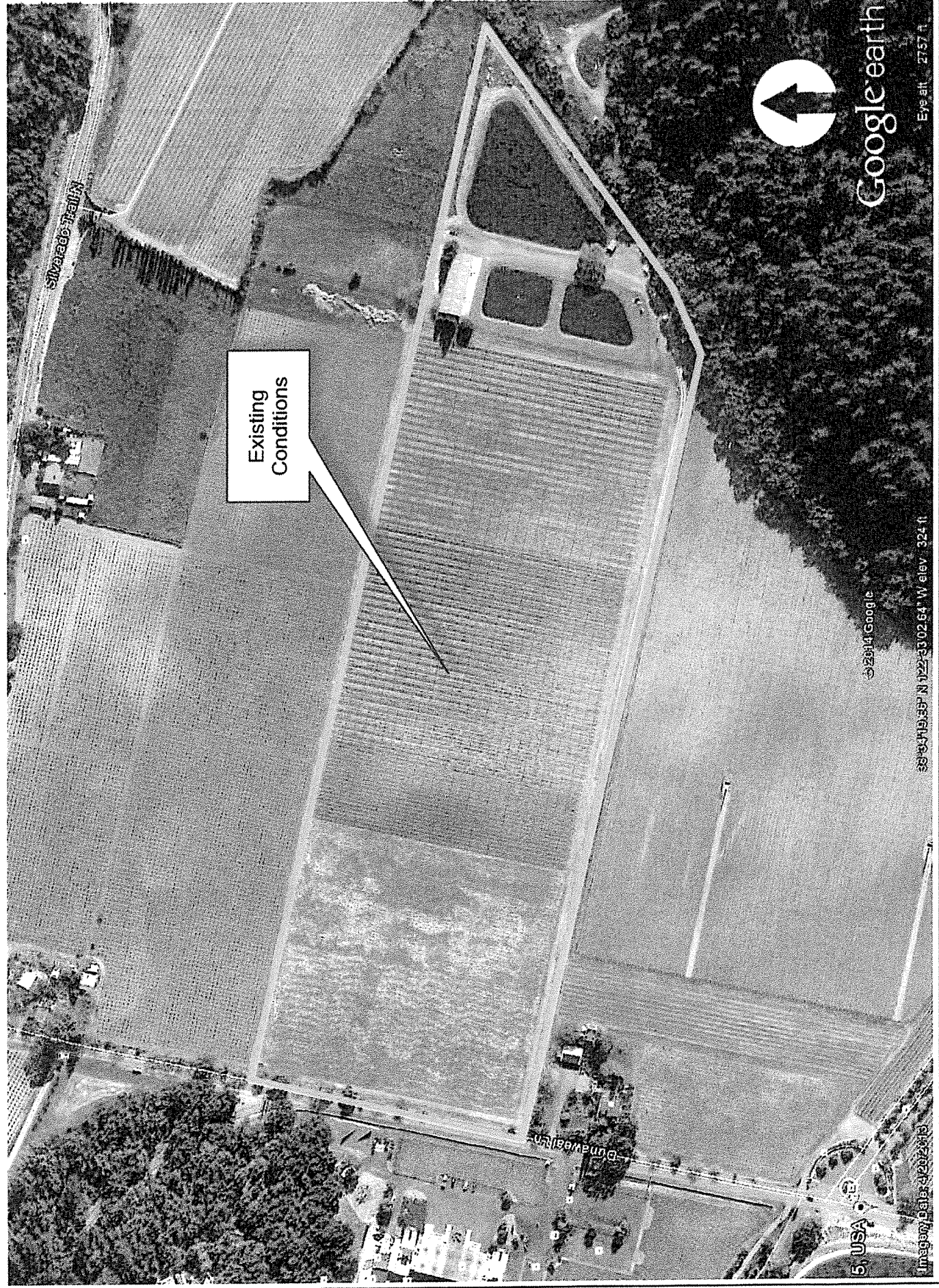
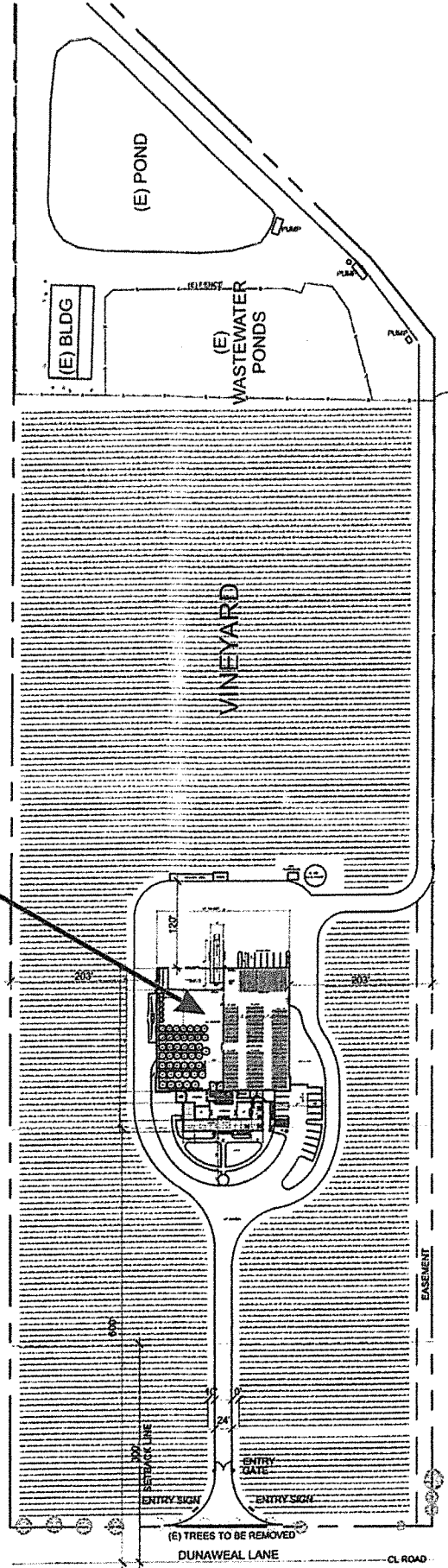


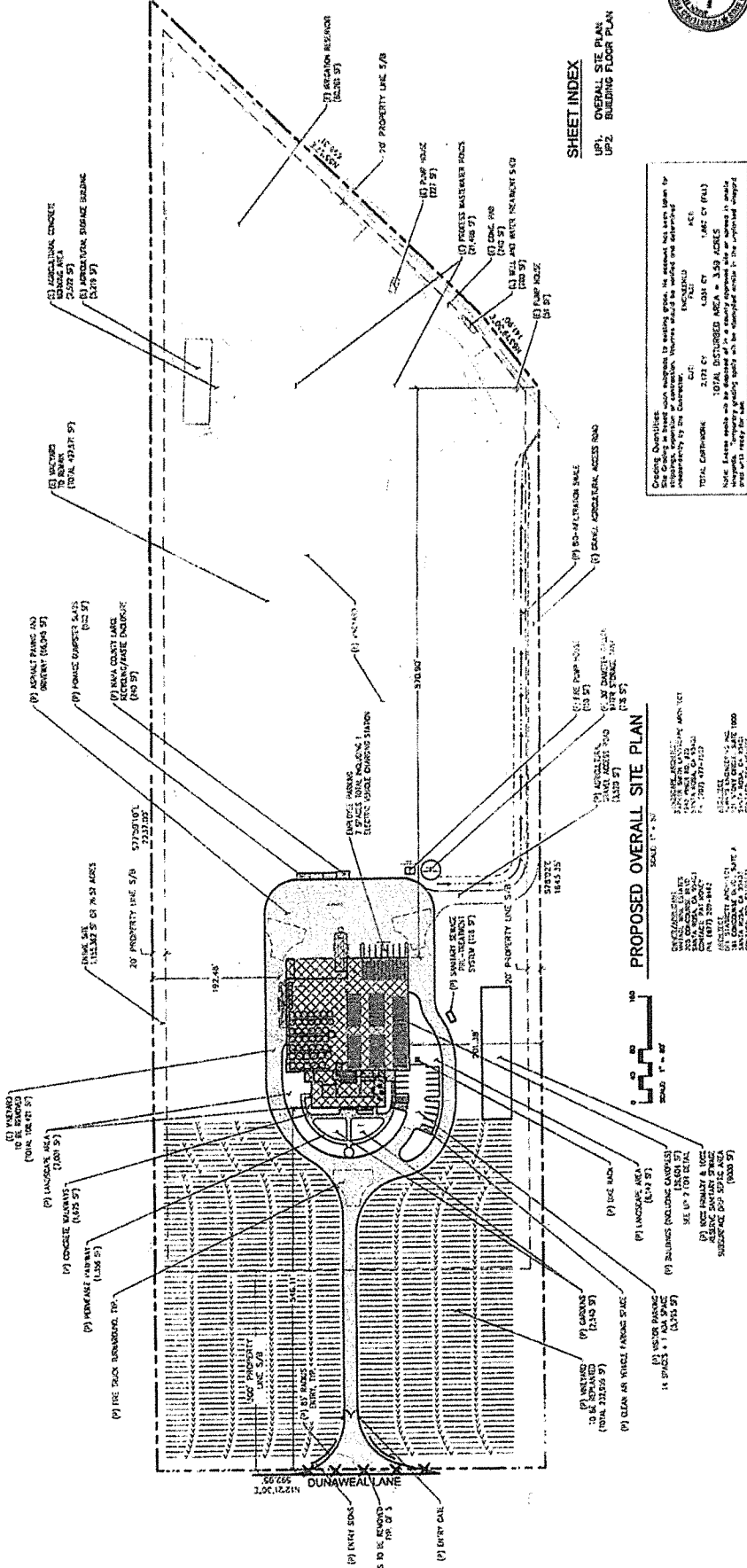
GIRARD NAPA VALLEY



PROPOSED WINERY



Proposed Site Plan



PROPOSED OVERALL SITE PLAN
 SCALE: 1" = 30'
 SHEET INDEX
 UPT1 - OVERALL SITE PLAN
 UPT2 - BUILDING FLOOR PLAN

PROPOSED OVERALL SITE PLAN
 SCALE: 1" = 30'
 SHEET INDEX
 UPT1 - OVERALL SITE PLAN
 UPT2 - BUILDING FLOOR PLAN

OWNER: Girard Winery
 PROJECT: Girard Winery - 100' PROPERTY LINE S/B
 TOTAL DISTURBED AREA = 3.59 ACRES
 TOTAL EXISTING: 2,173 SF
 TOTAL NEW: 1,000 SF
 TOTAL GROSS AREA: 3,173 SF
 TOTAL DISTURBED AREA: 3.59 ACRES
 TOTAL EXISTING: 2,173 SF
 TOTAL NEW: 1,000 SF
 TOTAL GROSS AREA: 3,173 SF
 TOTAL DISTURBED AREA: 3.59 ACRES

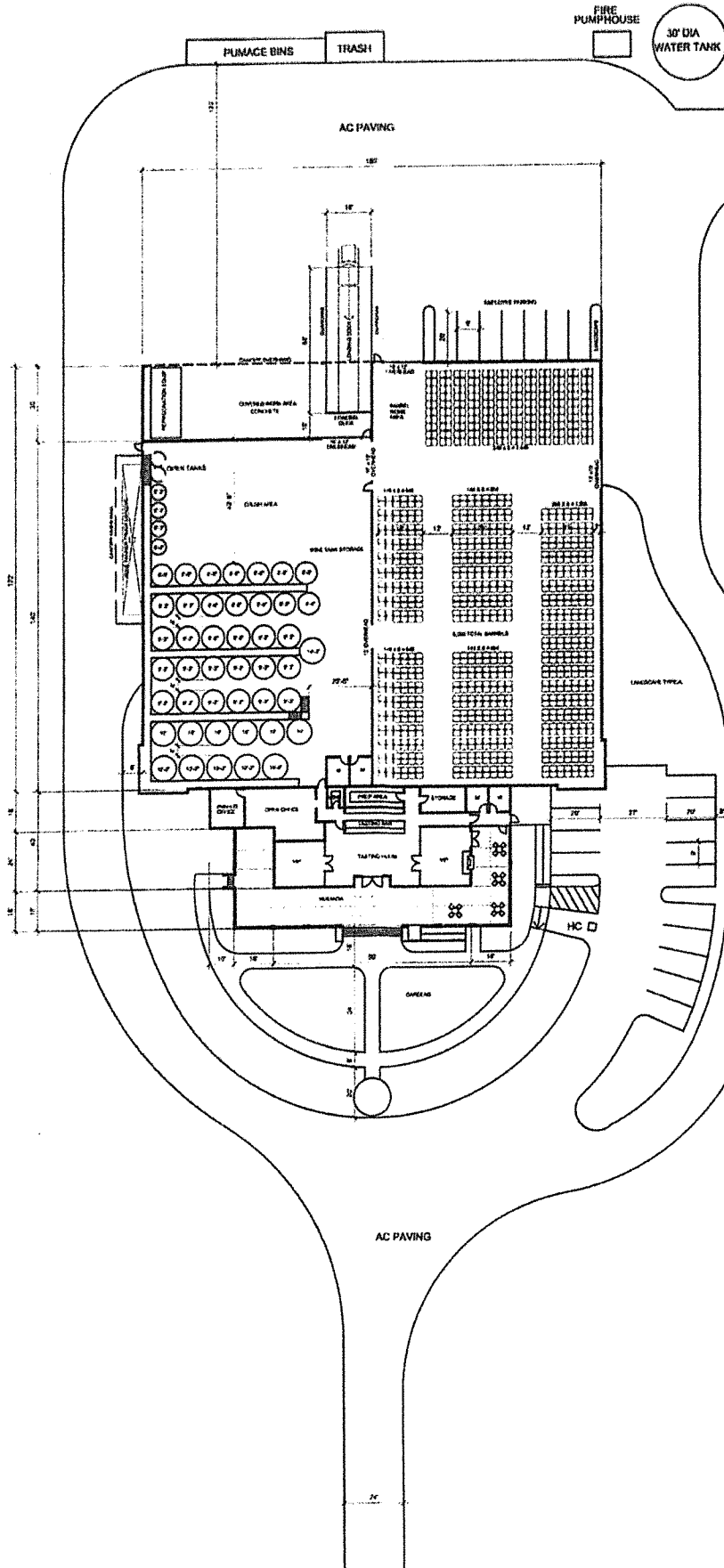
CONTRACTOR: [Name]
 ADDRESS: [Address]
 PHONE: [Phone]
 FAX: [Fax]

DATE: [Date]
 DRAWN BY: [Name]
 CHECKED BY: [Name]
 APPROVED BY: [Name]

SCALE: 1" = 30'
 SHEET INDEX
 UPT1 - OVERALL SITE PLAN
 UPT2 - BUILDING FLOOR PLAN



GIRARD NAPA VALLEY

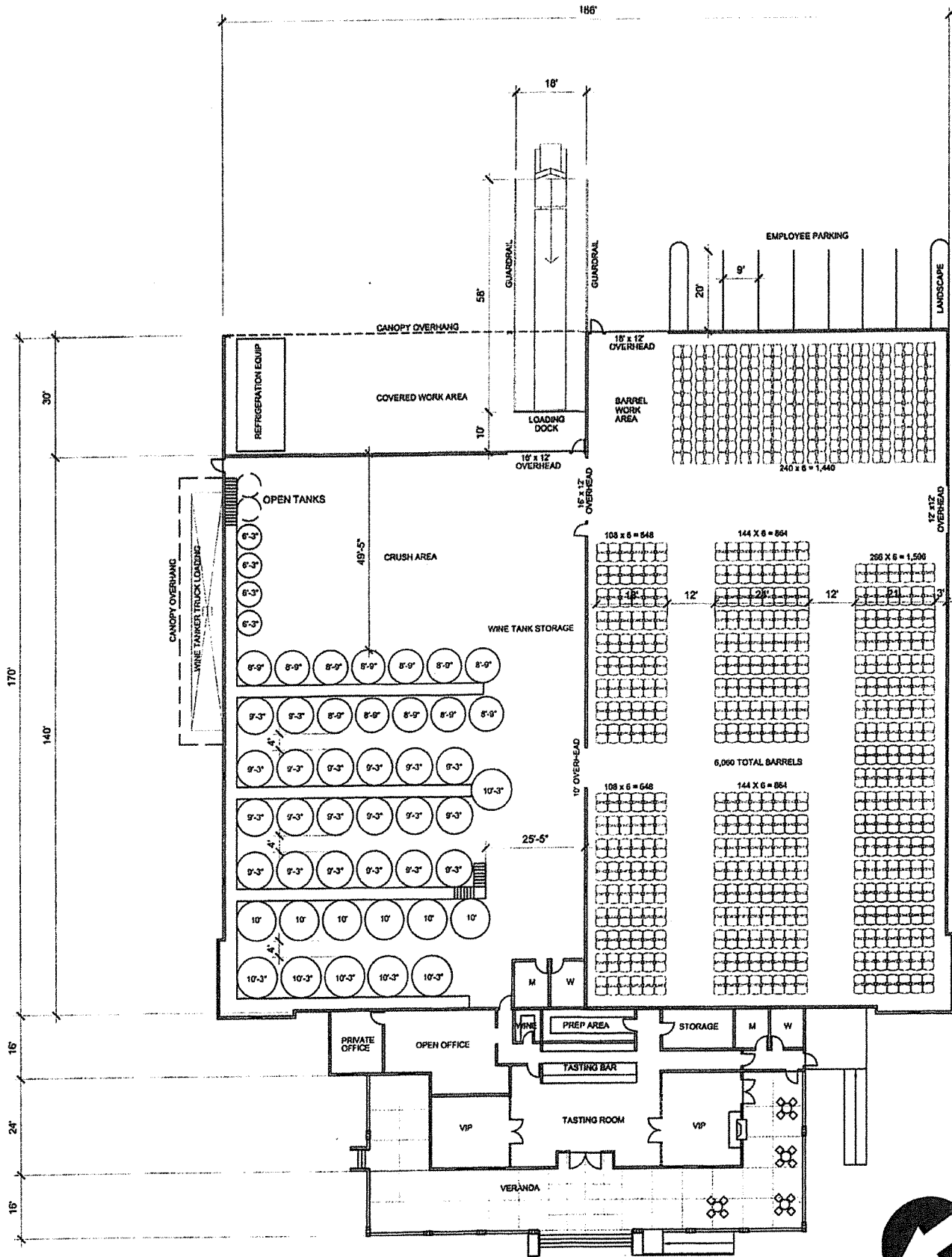


Site Plan Detail

BARRELS	15,875 SF
TANKS	13,080 SF
TASTING	3,010 SF
OFFICE	806 SF
TOTAL BUILDING	32,771 SF
COVERED WORK AREA	2,781 SF
COVERED VERANDA	2,628 SF



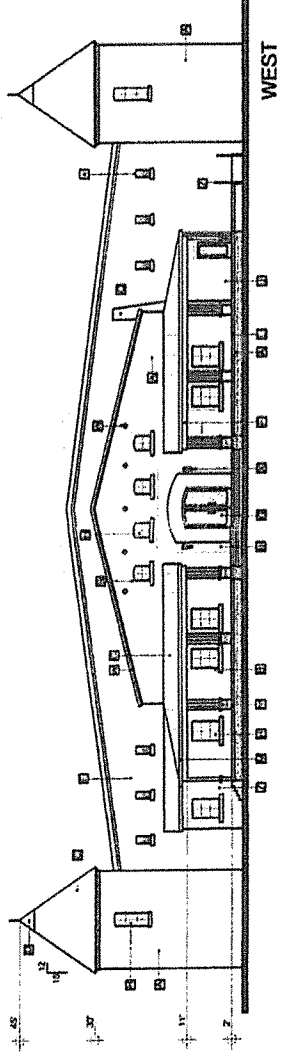
GIRARD NAPA VALLEY



Floor Plan

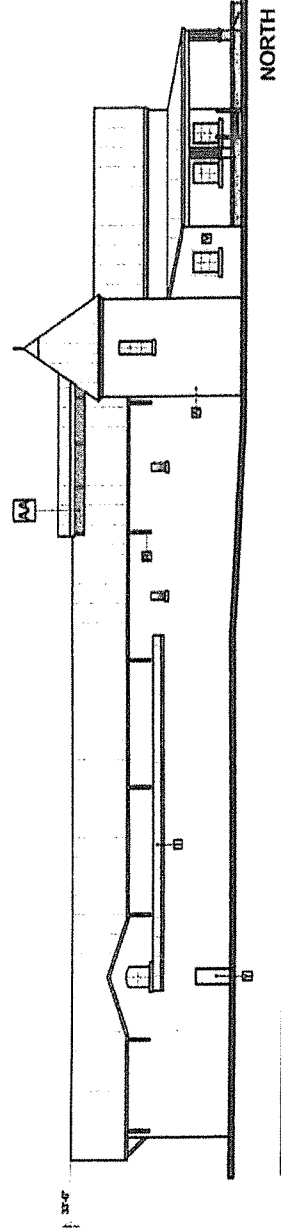
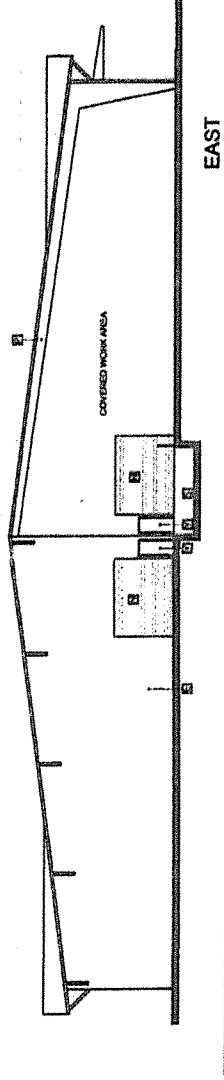
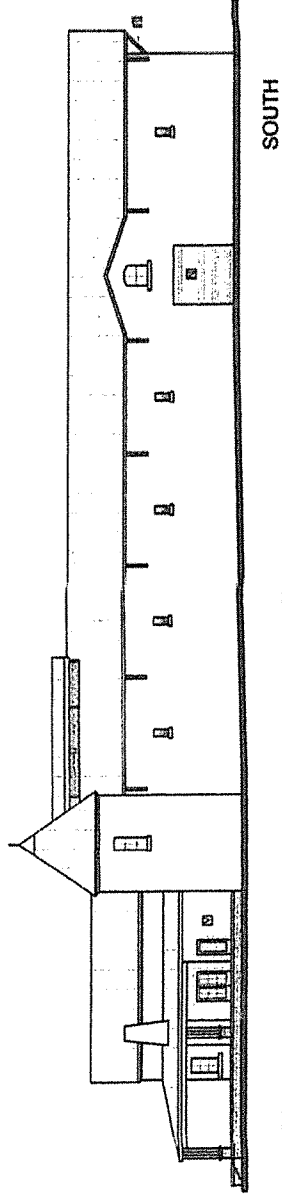


GIRARD NAPA VALLEY



MATERIAL LEGEND

- A** CONCRETE WITH STONE VENEER
- B** PLASTER TRIM
- C** METAL ROOFING
- D** METAL CAPPING
- E** CONCRETE
- F** WOOD BEAM AND POSTS
- G** WOOD DOORS
- H** DIVIDED LITE WINDOWS WITH LOW E GLASS AND STONE LEDGE
- J** EXTERIOR PLASTER
- K** RECESSED WINDOW WITH STONE LEDGE
- L** CONCRETE VERANDA
- M** PAINTED METAL GUTTER
- N** ROLL-UP DOOR
- P** EXPOSED METAL FRAMING
- Q** STONE CHIMNEY
- R** METAL KICKERS
- S** LOADING DOCK
- T** TRUCK LOADING CANOPY
- V** PLASTER
- W** DECORATIVE BOLTED IRON PLATES
- X** ENTRANCE LIGHTS
- Y** PAINTED METAL MANDOORS
- Z** PAINTED METAL HANDRAILS
- AA** VENTED LOUVERS
- BB** STONE BASE WITH CAP



3143 NORTH LAURELIN ROAD, SUITE 207
 SANTA ROSA, CALIFORNIA 95403
 PHONE (707) 532-0645



CONSULTANTS

SOIL



GIRARD
 WINERY

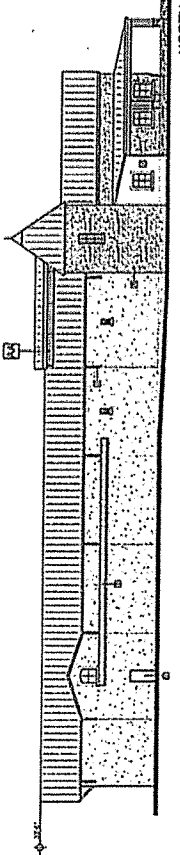
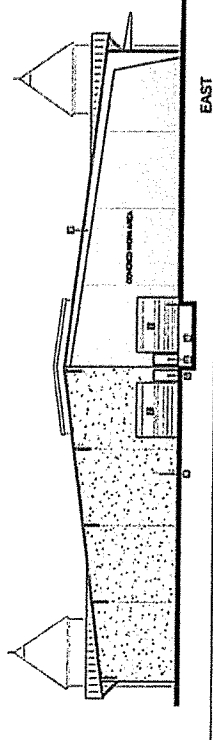
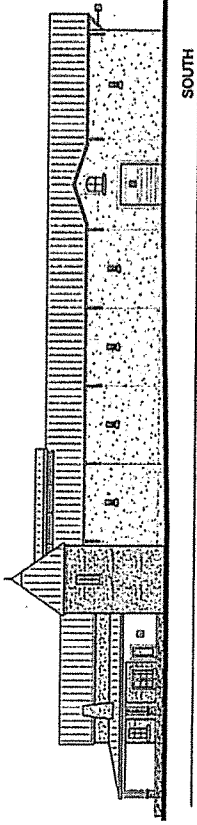
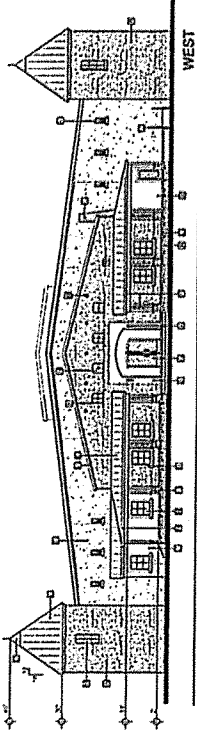
1877 DURANTEAL LANE
 CALISTOCA, CA

REV #	DATE	OWNER REVISION	DESCRIPTION
1			
2			
3			
4			
5			
6			
7			
8			
9			
10			

PROJECT NO. 1318
 PROJECT NAME
 PROJECT LOCATION
 DRAWN BY
 SCALE: 1/8" = 1'-0"
 © Copyright 2013
 All Rights Reserved

SHEET TITLE
 EXTERIOR ELEVATIONS

SHEET NUMBER
 A4



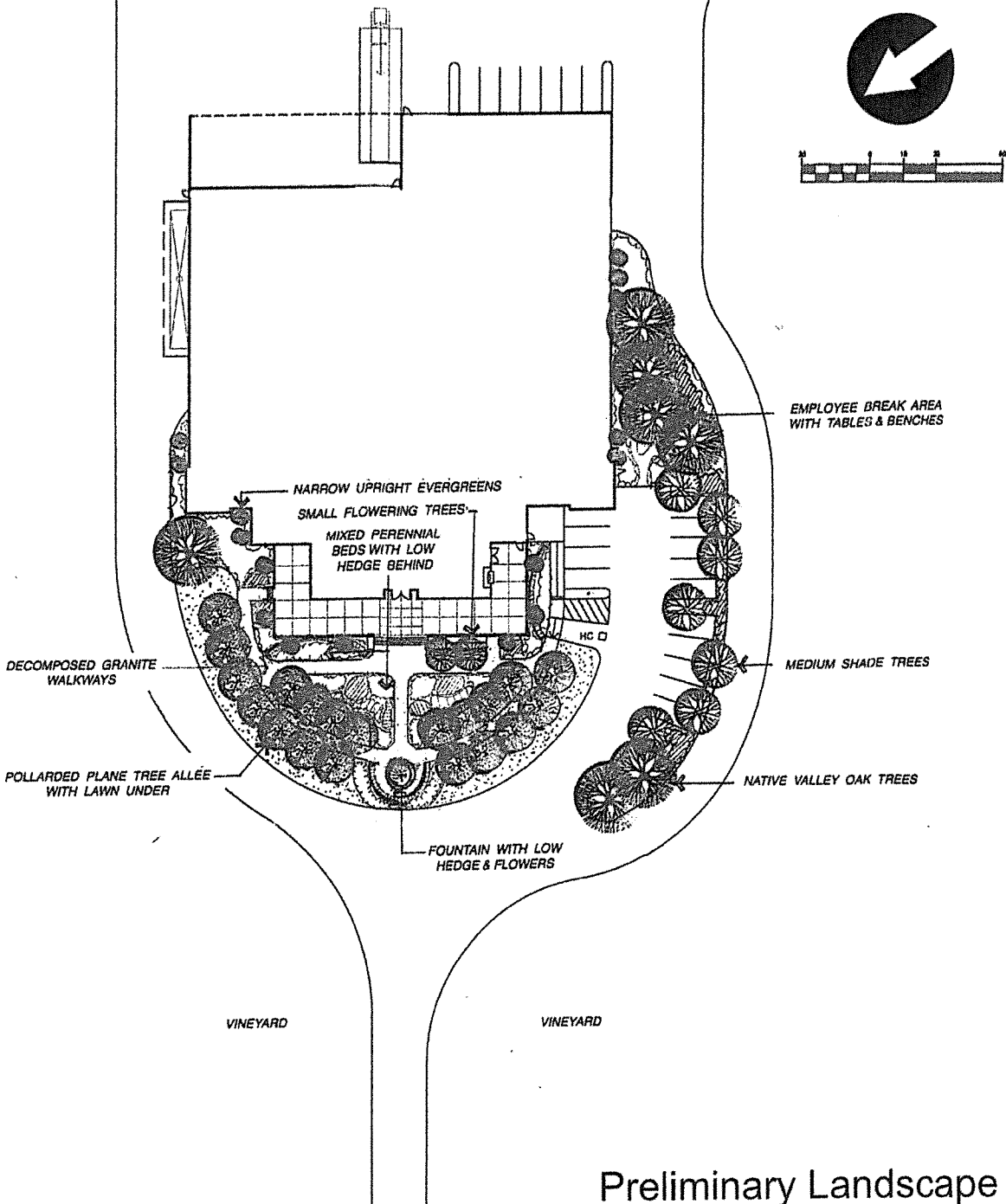
MATERIAL LEGEND

- A CONCRETE WITH STONE WENSER
- B PLASTER TRIM
- C METAL ROOFING
- D METAL CAPPING
- E CONCRETE
- F WOOD BEAM AND POSTS
- G WOOD DOORS
- H DIVIDED LITE WINDOWS WITH LOW E GLASS AND STONE LEDGE
- J EXTERIOR PLASTER
- K RECESSED WINDOW WITH STONE LEDGE
- L CONCRETE VERANDA
- M PAINTED METAL CUTTER
- N ROLL-UP DOOR
- P EXPOSED METAL FRAMING
- Q STONE CHIMNEY
- R METAL KICKERS
- S LOADING DOCK
- T TRUCK LOADING CANOPY
- V PLASTER
- W DECORATIVE BOLTED IRON PLATES
- X ENTRANCE LIGHTS
- Y PAINTED METAL HANDDOORS
- Z PAINTED METAL HANDRAILS
- AA VENTED LOUVERS
- BB STONE BASE WITH CAP

GIRARD NAPA VALLEY



POLLARDED PLANE TREE ALLEE



SEE ENTRY DRIVE FROM DUNAWELL LANE AT RIGHT

Preliminary Landscape Plan

GIRARD NAPA VALLEY

PLANT LEGEND

SYMBOL	PLANT DESCRIPTION & SPECIES	PLANTING SIZE	WATER USE
	EXISTING TREES TO REMAIN <i>Olea europaea</i> / Olive <i>Juglans hybrid</i> / Walnut		
	EXISTING TREES TO BE REMOVED <i>Juglans hybrid</i> / Walnut		
	LARGE NATIVE SHADE TREES <i>Quercus lobata</i> / CA Valley Oak	24" Box	Low
	MEDIUM SHADE TREES WITH FALL COLOR <i>Pistacia chinensis</i> 'Keith Davey' / Chinese Pistache	24" Box	Low
	ALLEE OF POLLARDED TREES <i>Platanus acerifolia</i> 'Columbia' / London Plane Tree	24" Box	Moderate
	SMALL FLOWERING TREES <i>Lagerstroemia hybrid</i> 'Tuscarora' / Coral Crape Myrtle	24" Box	Low
	NARROW UPRIGHT EVERGREEN SHRUB/TREES <i>Juniperus chinensis</i> 'Skyrocket' / Skyrocket Juniper	15 Gal.	Low
	LOW & TALL HEDGES <i>Buxus microphylla</i> 'Var.' / Boxwood (Low) <i>Prunus lyonii</i> / Catalina Island Cherry (Tall)	5 Gal.	Low/Mod.
	LOW TO MEDIUM SHRUBS & GRASSES <i>Arctostaphylos densiflora</i> 'Howard McMinn' / McMinn Manzanita <i>Ceanothus</i> 'Skyline' / CA Lilac <i>Mahonia pinnata</i> 'Ken Hartman' / CA False Holly <i>Loropetalum chinensis</i> var. / Purpleleaf Loropetalum <i>Arctostaphylos</i> 'Emerald Carpet' / G.C. Manzanita <i>Erigeron karvinskianus</i> / Santa Barbara Daisy <i>Calamagrostis arundinacea</i> 'Karl Foerster' / Feather Reed Grass <i>Myoporum parviflora</i> 'Putah Creek' / Ground Cover Myoporum	5 Gal.	Low
	PERENNIALS & ACCENT GROUND COVERS <i>Lavandula</i> Varieties / Lavender <i>Rosa floribunda</i> varieties / Floribunda Roses <i>Salvia gregii</i> , <i>spatheacea</i> , <i>leucantha</i> / Sage <i>Gaura lindheimeri</i> 'Siskiyou Pink' / Pink Gaura <i>Hemerocallis</i> 'Evergreen Pink or Yellow' / Evergreen Daylilies <i>Pennisetum orientale</i> / Oriental Fountain Grass	1/2 Gal.	Low/Mod.
	ACCENT GROUND COVERS & FLOWERS Annuals / Seasonal Flowers <i>Festuca californica</i> 'Serpentine Blue' / Blue CA Fescue <i>Tulbaghia violacea</i> 'Silver Lace' / Variegated Society Garlic <i>Rosa</i> 'Flower Carpet' var. / Ground Cover Roses	4 1/1 Gal.	Low/Mod.
	LAWN	Sod	Mod./High

LANDSCAPE NOTES

1. ALL PLANTINGS TO BE IRRIGATED WITH AUTOMATIC DRIP IRRIGATION SYSTEM (SUBSURFACE DRIP EMITTERS FOR LAWN AREAS). CONTROLLER TO HAVE MULTIPLE PROGRAMS & RAIN SHUTOFF DEVICE. PLANTINGS AND IRRIGATION SYSTEM WILL MEET THE LATEST REQUIREMENTS OF NAPA COUNTY'S "WATER EFFICIENCY ORDINANCE".

2. A TREE PROTECTION PLAN WILL BE INCLUDED ON THE CIVIL ENGINEERING PLANS THAT WILL REQUIRE PROTECTIVE FENCING; RESTRICTIONS ON GRADING OR TRENCHING WITHIN THE DRILLINES OF PROTECTED TREES; NO STORAGE OF MATERIALS WITHIN FENCED AREAS, ETC.

